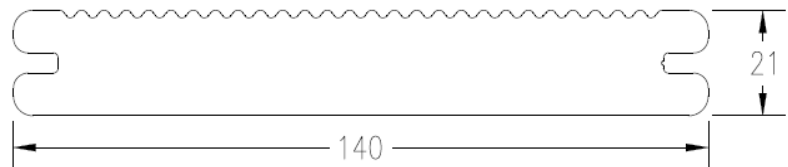
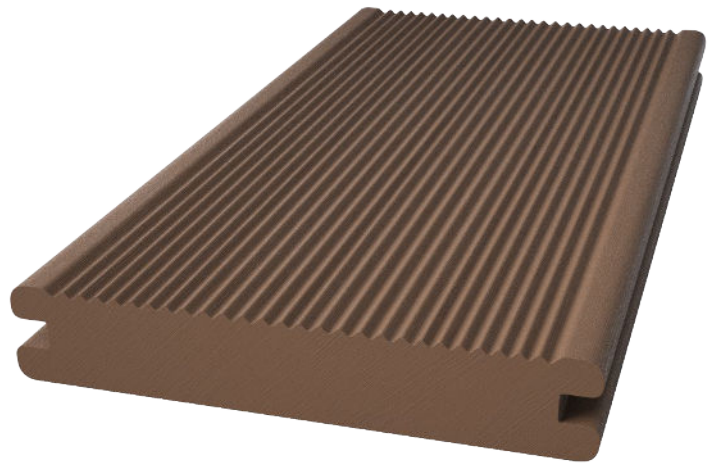


# TECHNICAL FEATURES

TECNODECK® FSL



TECNODECK® FSL

|   |                                  |
|---|----------------------------------|
| DENSITY, EN ISO 1183-1 (g/cm <sup>3</sup> )   | 1,33                             |
| WEIGHT (Kg/ml)  | 3,70 (+/- 5%)                    |
| INFLUENCE OF MOISTURE, EN 317   |                                  |
| WATER ABSORPTION (%)  | 0,30                             |
| SWELLING THICKNESS (%)  | 0,20                             |
| CONTENT AND RELEASE OF DANGEROUS SUBSTANCES   | Contains no dangerous substances |
| BENDING STRENGTH, EN 310 (N/mm <sup>2</sup> )   | 28,0                             |
| BENDING STRENGTH, EN 789 (N/mm <sup>2</sup> )<br>- characteristic value.                            | 22,0                             |
| MODULUS OF ELASTICITY IN BENDING, EN 310 (N/mm <sup>2</sup> )<br>(Distance between supports 500 mm) | 4600                             |
| IMPACT STRENGTH, EN 477   |                                  |
| +23°C/1KG   | 100 cm (9,8J) (no rupture)       |
| -10°C/1 KG  | 100 cm (9,8J) (no rupture)       |
| THERMAL EXPANSION COEFFICIENT (K <sup>-1</sup> )  | 41,4x10 <sup>-6</sup>            |
| ISO 11359<br>(-40°C, 80°C)  |                                  |
| SLIP RESISTANCE DIN 4843, PART 100<br>(Barefoot, dry and wet)                                       | Pass the specifications          |
| FIRE BEHAVIOUR  | Not tested                       |

## NOTE:

The Tecnodeck® profiles dimensions have a tolerance of ± 1mm.  
These features are only for information purposes, and the manufacturer may change them without previous notice.

v.01/2022